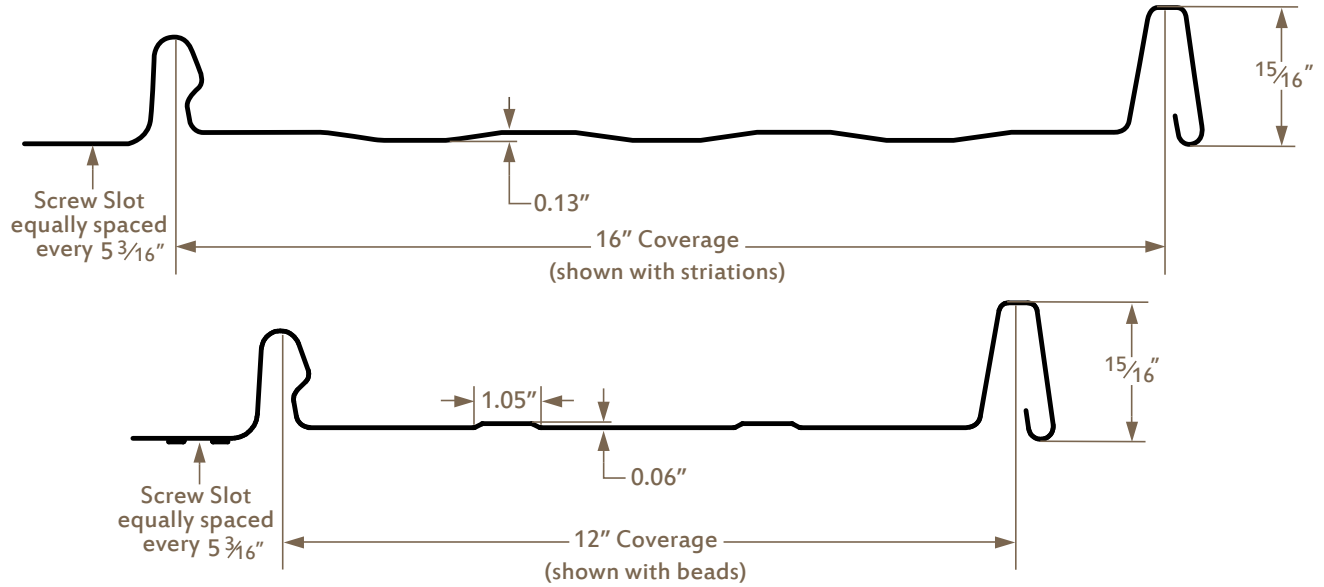


**METALLION
INDUSTRIES**

Loc Seam Roof Panel



RESIDENTIAL

**CONCEALED
FASTENERS**

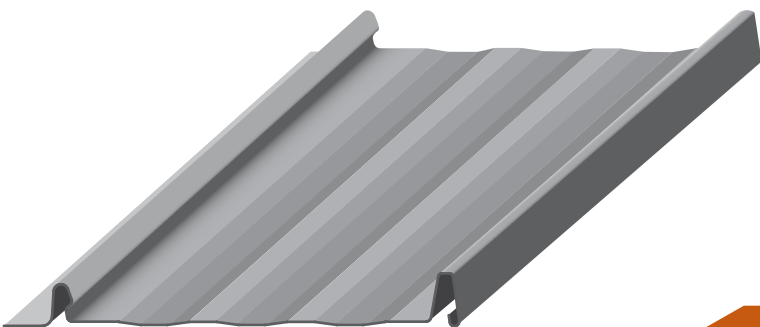
**12" OR 16"
COVERAGE**

**MINIMUM SLOPE
3:12**

SOLID SUBSTRATE

PANEL DESCRIPTION

- Applications: Residential, Light Commercial, and Agricultural
- Limited 40-year warranty paint
- Finishes on 12", 26 ga: 7 standard SMP colors
- Finishes on 16", 26 ga: 11 standard SMP colors
- Finishes 24 ga: 10 standard PVDF colors
- Corrosion Protection on Substrate:
 - AZ-50 (ASTM A792) for painted Galvalume®
 - G-60 (ASTM A653) for painted Galvanized
 - G-90 (ASTM A653) for PVDF painted 24 gauge
- Storm Shield surface protector on all standard colors
- Sheet lengths: One inch increments to any length
- For color availability, cool roof specs, and other panel info, please see our website: www.metallionindustries.com



TESTING DATA



- UL 2218 Impact Resistance
- UL 790, 263 Fire Resistance
- UL 580 Uplift Resistance

FASTENER INFORMATION

Fasten Panel to Wood using
#10-9 Low Profile Wood Screw

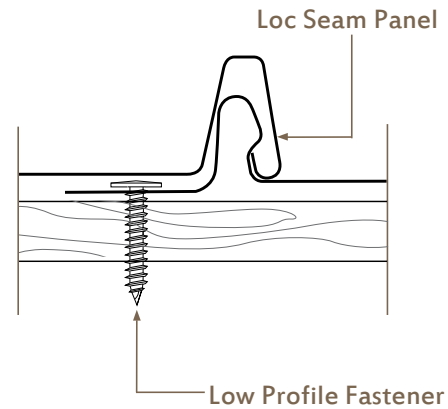
Fasten Panel to Steel using
#12-14 Low Profile Drill-Tip Screw

Screw thread should protrude no less than 1/4"
through the underlayment.

Install one screw every 16" within
pre-punched slots

1" long fastener slots, in the
screw flange, accommodate
some thermal movement.

PANEL FASTENING



Loc Seam Allowable Loads (lbs/ft ²) per span			Wind Load Factor = 1.0 (not increased 33%)								
Ga	Span	Load Type	2'	2.5'	3'	3.5'	4'	4.5'	5'	5.5'	6'
24	Single	L/180	82/63	52/40	36/27	26/20	19/15	14/-	10/-	7/-	6/-
		L/240	82/63	52/40	36/27	22/17	15/12	10/-	7/-	6/-	4/-
		L/360	78/62	40/32	23/18	15/12	10/8	7/-	5/-	4/-	3/-
	Double	L/180	82/63	52/40	36/27	23/20	20/15	15/-	12/-	10/-	8/-
		L/240	82/63	52/40	36/27	26/20	20/15	15/-	11/-	8/-	6/-
		L/360	82/63	52/40	33/26	21/16	14/11	10/-	7/-	5/-	4/-
	Triple	L/180	95/73	61/46	42/32	30/23	23/17	18/-	14/-	12/-	10/-
		L/240	95/73	61/46	42/32	30/23	23/17	18/-	14/-	11/-	8/-
		L/360	95/73	61/46	42/32	27/22	18/5	13/-	9/-	7/-	5/-

24 gauge has .0236" min Substrate Thickness, 50 KSI Tensile (UL)

Panel Width: 12"/16", ASTM A653

Loads are averages from similar products with design loads meeting AISI specifications